

Field Audit – Ctrl + Shift + A

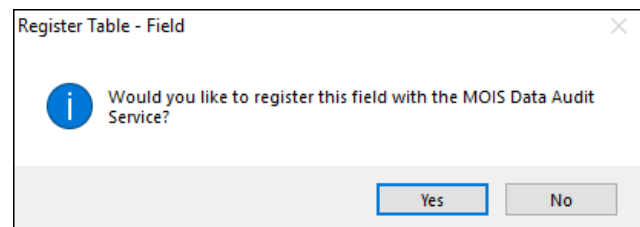
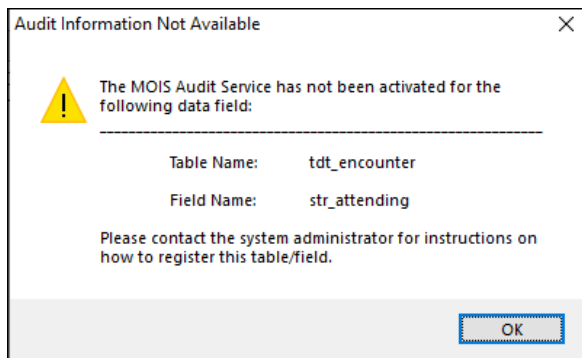
The Field Audit is used to register Input Fields with the MOIS Data Audit Service.

To use the Field Audit feature, you can press Ctrl + Shift + A in any field within MOIS. If a Field Audit is already registered for a specific field, when your cursor is in that field, when you press Ctrl + Shift + A you will be presented with the Change Audit Report.

Here is an example of a Visit Reason that was changed on the day sheet. You are shown what the original text was, along with the change made and the Date, Time and User that made the change.

HALLIWELL MEDICAL CLINIC				Page 1
CHANGE AUDIT REPORT AS OF 2019.05.17				
TABLE NAME:		tdt_encounter	WHEN MOIS STARTED AUDITING DATA CHANGES:	
FIELD NAME:		str_appt_note	Started By: ADMINISTRATOR	
RECORD ID:		501111	Started Date: 2019.05.15 11:35:50	
DATE	TIME	USER	DATA	
2019.05.17	12:47:58	admin	.	
2019.05.17	12:47:54	admin	Prescription Refill	

If that field is not registered, you will be presented with a warning that the Audit Information is not available for this field, and then asked if you would like to register it.



To Register the field, enter a Description name and press 'Register(F2)'

Audit Service Registration

Field Description

Table Name:

Field Name:

Description:

You may now use this audit for any future needs. If you would like to make edits to any of the registered fields or delete a field, navigate to Administration – Configuration – Field Audit Setup.

MOIS - HALLIWELL MEDICAL CLINIC

Record Modules Views Action Utilities Print Maintenance Help Desktop For: PRACTITIONER, GENERAL

Administration

- Concept Mapping
- Encounter Form
- Flowsheet
- Measurement Inputs
- Letter Templates
- Paper (PDF) Forms
- Care Plan Templates
- Task Set Templates
- External Service Providers
 - Clinics
 - Providers
 - Organizations
- Configuration**
 - System Settings
 - Chart Summaries
 - Field Audit Setup**
 - Password Policy
- Codeset Management
 - Sources
 - Systems
 - Codes
 - Reference Sets
 - Mapping
 - Lookup Settings

Field Audit Setup List

Delete Record Edit Record Close Window

Table Name	Field Name	Description
tdt_admission	str_report	Report Field
tdt_adverse_event	dtm_administered	dtm_administered
tdt_adverse_event	dtm_hospital_admission	dtm_hospital_admission
tdt_adverse_event	dtm_hospital_discharge	dtm_hospital_discharge
tdt_adverse_event	dtm_outcome_death	dtm_outcome_death
tdt_adverse_event	dtm_report	dtm_report
tdt_adverse_event	num_administered_hr	num_administered_hr
tdt_adverse_event	num_administered_min	num_administered_min
tdt_adverse_event	num_allergic_duration_day	num_allergic_duration_day
tdt_adverse_event	num_allergic_duration_hr	num_allergic_duration_hr
tdt_adverse_event	num_allergic_duration_min	num_allergic_duration_min
tdt_adverse_event	num_allergic_interval_day	num_allergic_interval_day
tdt_adverse_event	num_allergic_interval_hr	num_allergic_interval_hr
tdt_adverse_event	num_allergic_interval_min	num_allergic_interval_min
tdt_adverse_event	num_attachments	num_attachments
tdt_adverse_event	num_days_hospital	num_days_hospital
tdt_adverse_event	num_days_prolonged	num_days_prolonged
tdt_adverse_event	num_largest_diameter_cm	num_largest_diameter_cm
tdt_adverse_event	num_local_duration_day	num_local_duration_day
tdt_adverse_event	num_local_duration_hr	num_local_duration_hr
tdt_adverse_event	num_local_duration_min	num_local_duration_min
tdt_adverse_event	num_local_interval_day	num_local_interval_day
tdt_adverse_event	num_local_interval_hr	num_local_interval_hr
tdt_adverse_event	num_local_interval_min	num_local_interval_min
tdt_adverse_event	num_neuro_duration_day	num_neuro_duration_day
tdt_adverse_event	num_neuro_duration_hr	num_neuro_duration_hr
tdt_adverse_event	num_neuro_duration_min	num_neuro_duration_min
tdt_adverse_event	num_neuro_interval_day	num_neuro_interval_day
tdt_adverse_event	num_neuro_interval_hr	num_neuro_interval_hr
tdt_adverse_event	num_neuro_interval_min	num_neuro_interval_min
tdt_adverse_event	num_other_duration_day	num_other_duration_day

Ready. Go To Chart... Task Item: - Msg Item: - User: admin Site ID: 2299 v02.22.99 b190110